



**Waihi School**

**Boarding Handbook  
2022**

## Contents:

Housemaster Welcome	3
Pyne House Team: Contact Details	4
The Waihi Boarding Manual	5
The Boarding Team	5
Waihi School Values	5

### General Information in Alphabetical Order:

Access to School Facilities	6
Bicycles	6
Birthdays	6
Boarders' Dinner	6
Boarders' Roll Call	6
Boarding House Contacts	6
Catering	6-7
Cleaning Staff and Laundry	7
Communications	7
Covid-19 mask wearing	7
Cube	7
Daily Routines	7-8
Dental Nurse	8
Discipline	8
Dormitories	8
Dormitory Prefects	8
Haircuts	8
Health and Wellbeing	9
Emergencies	9
End of Term	9
Exeats	9-10
Gap Tutors	10
Leave	10
Leavers' Weekend	11
Mail	11
Mobile Phones	11
Police Vetting	11
Reading	11
Repairs	11
River Access / Pump Track / Low Ropes	11-12
Sport	12
Security	13
Special Diets	13
Services in Chapel	13
Telephone Calls	13
Tuck	13
Uniform and Clothing Requirements	13-16
Using Devices: School Policy	16
Visitors / Transportation	17
Waihi School Shop	17
Weekend Activities	17
River Trip Permission Form / Bus Behaviour Contract	18-19

# Welcome to Pyne House

*Dear Parents*

*Within Pyne House you will find a calm, nurturing and motivating atmosphere with a real care for the individual and their wellbeing being at the forefront of boarding life. It is a strong belief of mine to foster and promote a 'have a go attitude' in all the exciting areas of school life that Waihi has to offer. Pyne House is a place of friendship, mutual support and happiness. That is what our boarders are. It is why they are proud to belong.*

*Pyne House is characterised by its family feel. The furnishings are comfortable and welcoming giving our boarders a real home from home atmosphere. The house is the heartbeat of school life, where children grow as individuals and live alongside each other showing kindness and concern across year groups. Senior boarders take their responsibilities to younger boarders very seriously, but the real character of the house is seen in the informal relationships across year groups.*

*As Housemaster I will empathise, challenge, motivate, discipline and laugh with all boarders, whilst instilling a passion for excellence both inside and outside the classroom. I have 19 years teaching experience in Prep and Senior Schools with management positions in pastoral, academic and sporting departments. This holistic view of education is what excites me, and your child will be exposed to this broad belief of personal development.*

*The house is excellently supported by the pastoral team that includes matrons, duty staff and GAP tutors. Together we instill life skills into your child that will enable them to flourish as they mature and go on to achieve great things both at Waihi and beyond.*

*I am joined by my family; Lisa my wife, an Occupational Therapist, and our two sons, Thomas and Harry. We love being part of the Waihi School community, ensuring your child thrives during his time in Pyne House.*

*Mr O J Clayson*

*Housemaster and Senior Management Team*





## Pyne House Team: CONTACT DETAILS

### Housemaster



Oliver Clayson  
021 289 1980

Ollie has been a qualified teacher since 2004 and has worked in Secondary and Prep Schools in the UK. He has held management positions in academic, sporting and pastoral fields. He has also been a Safeguarding Governor in a Primary School for 5 years, and sees it as his responsibility to ensure your child is happy, active, and thrives whilst in Pyne House.

Ollie is a keen cricketer having represented England at U19s and had a taste of the professional game. He plays both cricket and hockey to a high club level and is, of course, a huge rugby fan.

### Matrons



Stacey Jackson  
021 293 3509

For the past six years I have been an Early Childhood teacher at Peel Forest Preschool. My role as Matron at Waihi School works on my strengths of being nurturing, having a sense of humour, as well as having an approachable personality.

The wellbeing of each child in Pyne House is very important to me, and making it the best home away from home for our boarding students.

I have three children. My son Alex is 14 years old, and twin daughters who are 12 years old. My partner Brendon is the manager of a local company, and is also the drummer in a band.



Lynne Davison  
027 389 0187

Lynne is our Weekend Matron. She has recently relocated to the Temuka District to be closer to family. Lynne is a proud aunty of five and chosen aunty of many.

Before coming to Waihi School, she worked as an event supervisor running weddings, gala dinners, and on the Tramway's Restaurant.

Lynne's passions in her spare time are to make jewellery and mosaics in her workshop.



Lisa Clayson  
021283 1981

Lisa is a qualified Occupational Therapist and has been practicing since 2003. She has worked in both major hospitals and community hospitals in the UK, and has held significant management responsibilities that include leading a team of OTs, Physiotherapists, Nurses and Social Workers in the field of Rapid Response.

As a caring professional and mother of two boys, Lisa is very much looking forward to getting to know you and your child/ren.

### 2022 Gap Tutors

Owen Short  
Lucy Hickson

[owen.short@waihi.school.nz](mailto:owen.short@waihi.school.nz)  
[lucy.hickson@waihi.school.nz](mailto:lucy.hickson@waihi.school.nz)

021 588 119  
022 567 7925

## The Waihi Boarding Manual

The object of this manual is to provide parents of boarders, and the boarders themselves with an idea of what goes on in Pyne House, how the relevant parts of each day unfold, and the expectations we have.

## The Boarding Team

Pyne House comes under the direction of the Housemaster who has responsibility for all that goes on in the house. There are also GAP tutors and Duty Staff who help out each evening. A key part of a boarder's experience is the care provided by the Matrons.

<b>Housemaster</b>	Oliver Clayson	<a href="mailto:oc@waihi.school.nz">oc@waihi.school.nz</a>
<b>Duty Staff</b>	Trish Cameron, Anita Johnston, Nathan Morland, Jess Sharp, Allan Short, Scarlett Stott, Tegan Westland	
<b>Matron</b>	Stacey Jackson	<a href="mailto:matron@waihi.school.nz">matron@waihi.school.nz</a>
<b>Matron</b>	Lynne Davison	<a href="mailto:matron@waihi.school.nz">matron@waihi.school.nz</a>
<b>Matron</b>	Lisa Clayson	<a href="mailto:matron@waihi.school.nz">matron@waihi.school.nz</a>
<b>2022 Gap Tutors</b>	Owen Short, Lucy Hickson	

Supervision comes from duty members of staff who are responsible for routine and discipline.

Staff spend the evening interacting with the boarders, ensuring they are happy, but always ensuring that everyone is calm.

Between 8.00-8.30pm is quiet time in the dorms. Boarders are in bed reading before lights out at approximately 8.30pm. A duty member of staff patrols after lights out.

Although relatively uncommon, missing home occasionally occurs and is more prevalent amongst the younger boarders. Sensitivity and a constructive approach are all important. We discourage children from phoning home in the first instance, as this tends to make attachment issues worse in the long term.

## Waihi School Values

**Consideration and Cooperation:** We try to be a good friend to others, to support our peers, to be inclusive and to be a good listener.

**Kindness:** It is important to be caring, to be compassionate, and kind to all.

**Love of learning:** We have a positive attitude to our learning. We are focused, we take on challenges, and we are inquisitive and creative.

**Responsibility:** It is important to be responsible and reliable so that people can depend on you.

**Honesty:** We want everyone to be honest and trustworthy and to always tell the truth no matter what.

**Respect:** We need to have respect for other people, for property and for our environment. We want our world to be safe and tidy, clean and green.

**Manners:** Everyone at Waihi School should be courteous and polite. Good manners show that you care about other people.

**Tu Igitur Perfer Adversa:** This is our school motto (*Thou shalt therefore endure hardship*). It means that in striving for success, that we are persistent, we have determination, and we value the struggle that comes with difficulties – it makes us stronger!

## **General Information in Alphabetical Order:**

### **Access to School Facilities**

Boarders have access to all school facilities such as the hall, pool, library and tennis courts.

Each dormitory can accommodate up to 12 boarders. Each dormitory has a dorm leader. These are senior boarders whose role it is to ensure everybody in their dormitory is happy and contented.

The Housemaster Oliver Clayson, and Duty Staff; Nathan Morland, Annabel Morris and Tegan Ristow, all live on site in staff houses with their respective families. Matrons have a flat within the boarding house. Our tutors have accommodation within the boarding environment also.

### **Bicycles**

These can be brought to school all year round, whilst their usage will be decided by the Housemaster and Groundsmen depending upon the weather. It is highly likely use around school will be limited to Term 1 and 4, but use in the Orchard and on the Pump Track may be stretched across all terms.

The students bring bikes at their own risk.

**It is recommended that students provide locks for their bikes.**

### **Birthdays**

Parents may choose to offer a birthday shout, provided the Classroom teacher or Housemaster's approval is sought. A confectionary item may be purchased for each student in the class or boarding house and shared out by the classroom teacher or matron at an appropriate time of the day.

**This is certainly not a requirement.**

### **Boarders' Dinner**

Held near the end of Term Four, this is an annual event, and is a dinner especially for boarders to celebrate their year of boarding. This is a formal dinner for staff and children only in which the boarders take a full part in planning the meal, and the entertainment.

### **Boarders' Roll Call**

At the beginning of each term you will note on the calendar 'Boarder Roll Call'. The associated time indicates to parents the final time that boarders should be back and settled into the school.

5.00pm roll calls mean dinner is being provided at school.

### **Boarding House Contact**

The Boarding House may be contacted on **03 687 8014 (option #5)**. If unattended the line will be diverted to voicemail. All messages for the Matron or Housemaster may be left on this number.

### **Catering**

The kitchen is at the heart of the school, we often say it is the most important room in the school. Refuelling our boarders and getting it right makes running the rest of the school so much smoother! Catering provide breakfast, morning tea, lunch, afternoon tea, toast and spreads after sport, dinner and supper to boarders. In addition, fresh fruit is available constantly.

Menus have been designed to cater to all our students who lead a very active life. Much effort is put into variety, nutritional value and presentation of these meals. Students are reminded regularly

that they must access food at these times to sustain their bodies. This is often a change for new boarders who are used to accessing food at will.

The dining room is in many ways the hub of the school, it is where all boarders, day students and staff dine together and it is where important social occasions take place. All students are expected to behave with courtesy and good manners at meal times.

If you would like to discuss the dietary requirements of your child, please contact the Matron.

## Cleaning Staff and Laundry

Our cleaners work very hard every day to keep the boarding house clean and the boarders are expected to keep their personal space tidy and to assist with general tidiness around the boarding house.

Our laundry staff work incredibly hard to keep all uniforms and house blues clean, mended and available.

**We ask that parents have all items clearly labelled with their child's name to assist the laundry.**

## Communications

The school website, the Waihi Facebook page, Seesaw, and emails are all sources of information to parents.

Waihi News, the school newsletter is sent out every two to three weeks.

Weekly sports draws are prepared by Wednesday lunchtime for the upcoming weekend.

## Covid-19 Mask wearing

After the Government recently shared their decision to scrap the traffic light setting, mask wearing is solely at the discretion of an individual. Any child or staff member who chooses to wear a mask will be supported in their decision.

## Cube

We do encourage boarders to bring photographs, posters, cushions, throws, etc. from home to personalise their sleeping area, and make it feel special for them. Children are only invited into each other's cube.

## Daily Routines

### Morning routine Monday to Friday

Boarders are woken by staff at 7.00-7.30am. They are expected to get up, shower, tidy their cubicle and make their bed, get dressed in full school uniform, and make themselves presentable. Breakfast is served between 7.45am and 8.15am.

### Weekends

The Housemaster produces a roll of boarders for the weekend and this is circulated to all duty staff. Occasionally, full boarders receive invitations to spend a weekend at the home of a friend. No boarder is allowed to leave the premises in such circumstances unless the school has received permission for this outing from their parents.

Saturday nights take a variety of guises. Duty staff provide the evening's entertainment, and in the winter months boarders can expect anything from a quiet evening watching a dvd, to an outing to the local cinema, or trip to a rugby game. The extra hours of light in the summer months afford the boarders an even greater breadth of opportunity.

Sundays are the only day of the week when the boarders do not have to share their 'home' with the day students and as such we aim to make the day as different to the other six days of the week as possible. Therefore, Sundays are our outing days between the hours of 11.00am–5.00pm. Please note as we are offsite **5.00pm is the earliest students on leave can return on a Sunday** there will be no staff onsite to receive students who arrive earlier.

### Evening Routine

4.00pm	School day finishes and boarders return to Pyne House to change and put bags away
4.15pm	Free time (fruit snack available)
5.45pm	Dinner
6.15pm	Prep/Reading begins
7.00pm	Free time (outside in summer), and telephone time (on set days); showers
8.00pm	Bell: all boarders inside - supper
8.15pm	Brush Teeth and Years 5-7 boarders on their beds reading; Year 8 boarders duties
8.35pm	Lights out for Years 5-7; Year 8 boarders on their beds reading
8.45pm	Lights out for Year 8

The boarders shower, prepare for bed and organise their laundry according to an established routine. Once ablutions and laundry have been dealt with, boarders are encouraged to read quietly. The times for lights out are not to be taken as written in stone, and are at the discretion of the staff member on duty.

## Dental Nurse

A South Canterbury dental caravan visits school once a year, generally in Term Two or Three. All students are seen by the dental nurse unless otherwise requested by parents. If a student needs urgent dental treatment, contact may be made with the Dental Nurse at the Temuka Primary School Dental Clinic.

## Discipline

Discipline within Pyne House will follow a similar policy that is in place during day school hours for all pupils. Boarders will be made aware of how it works and a copy also posted outside Matrons flat. It is in place to protect and also support boarders.

## Dormitories

Boarders are placed in a different dorm each term. Part of boarding life is about interacting with a variety of other boarders.

## Dormitory Prefects

Each dormitory has one or more dormitory leader appointed by the Housemaster. The role of the dorm leader is that of mentor, and role model for the dorm. Regular meetings are held to exchange information and provide help and advice.

## Haircuts

Boys hair must be short, neat and tidy, and girls neatly tied back.

The Matron will book a haircut for any child she perceives as requiring one. The charge will be added to the extras account at the end of each term.



## Health and Wellbeing

When students with particular health or special needs are identified, a suitable course of action or treatment is designed in collaboration with parents, health professional and any relevant staff members. In the case of medical emergency, Pyne House and the School will take advice from the Ministry of Health and Ministry of Education.

**All medication (including vitamin supplements etc) must be handed to the Matron at the beginning of each term with instructions on its administration. No medication is to be kept in cubicles unless prior permission has been provided by the Housemaster and Matron**

It is common during the winter terms for students to catch colds and other winter bugs. It is understandable that living in close proximity to other students that these can be transmitted very quickly. Where appropriate, the Matron will remove the boarder from their dorm and into the sick bay, if the school requests that you collect your child due to ill health it is always with your child's and other boarders best interest. Accordingly, boarders should only be brought back to school once fully well.

- **Doctor**

The school has a relationship with the Four Peaks Medical Practice in Geraldine, where appointments for boarding students can readily be made. Please contact the Matron if you have any concerns regarding your child's health.

- **Specialists/Dental Appointments**

If a boarder requires specialised treatment, parents are requested to arrange appointments where possible during the holidays. If this is not suitable, in some circumstances we may be able to arrange transport and supervision for a boarder to attend such appointments. A transport charge will be added to your child's account at the end of term. Such arrangements must be communicated to the Housemaster or Matron at the earliest opportunity.

## Emergencies

The boarding house has emergency procedures displayed in the hallway and Matrons office. In the event of an emergency the house is evacuated and the roll will be taken by a boarding house staff member who will report to the Housemaster/Headmaster. A trial evacuation will occur within the first week of each year and then during Terms Two, Three and Four.

In the case of a Civil Defence emergency, all students will remain within Pyne House until their parents can be contacted to arrange to have them transported home safely. In the case of a medical emergency such as a pandemic, the Trust Board will determine whether to close either the entire school or Pyne House based on their assessment of the danger to the physical wellbeing of the school community.

## End of Term

The calendar will indicate the date for each 'end of term'. Generally speaking, this is at the close of the school day. In Term Two, school finishes after sport on Saturday as we are mid-way through the winter season, and Term Four ends after Prize Giving on the last Saturday. **Boarders always travel in Number One uniform** at the beginning and end of term.

## Exeats

Exeat breaks allow boarding students who live further afield to have a long weekend at home with their families. There is usually one or two per term dependent on the length of the term. We

attempt where possible to place our school events beside exeat breaks, allowing parents the opportunity to attend before taking their child home.

## Gap Tutors

The school is fortunate to have the assistance of gap tutors each year to assist around the school and with the students. Their relationship with the students is generally that of a 'big brother or sister' and students form a close bond with these tutors. Within the boarding environment, tutors assist with meal times, prep, supper, games and activities, and outings that are arranged during the weekend.

## Leave

All leave applications must be submitted to the Housemaster by 9.00am every Monday. Leave applications after this time place unreasonable demands on organisation within the school and we ask that parents respect this deadline.

Boarders' parents may apply for leave during weekends that do not have a calendared, school or notified commitment.

Weekends unavailable for leave are:

- The first weekend in Term One.
- Any weekend where a notified activity, event or outing is organised. These are calendared wherever possible in the term fixtures list, by staff notices to parents, or by newsletters.

On other weekends available during the term parents may apply for leave under the following conditions.

- Application for leave is submitted via email to [leave@waihi.school.nz](mailto:leave@waihi.school.nz) Housemaster / Matron will confirm receipt.
- Leave is not a right, application for it is. Leave may be declined for any boarder for any number of reasons (discipline, sport commitments etc).
- Boarders must fulfil any Saturday sport commitment they may have.
- Boarders on weekend leave may return to school by 8.00pm Sunday, or Monday morning by 8:30am.
- We ask that parents please take responsibility for leave. Increasingly we find boarders asking, organising and phoning to set up leave. **This is a parent responsibility.** The Housemaster then communicates leave to parents and boarders. Boarders do not need to ring to check on leave.

**Uniform: Boarders travel in full Number One Uniform at the beginning and end of term. Boarders going on leave from school at other times must be dressed in full Number Two Uniform and return in Full Number Two Uniform, unless travelling on public transport, when full Number One Uniform is required. Boarders going on leave from sport may wear their Waihi tracksuit and return in their tracksuit unless travelling on public transport when they must travel in Number One Uniform.**

*This is something that is special to Waihi and is an important part of the school's external image and is not negotiable*

Parents or relatives may visit with boarders and in consultation with the duty teacher may take their child off site for a decided period of time. Weekday tea leave may be taken after 4.30pm and they are to be back to school by 8.00pm. This leave is not an excuse for prep not being done. Boarders are responsible for completing all requirements. All boarding parents must complete a list of approved visitors.

## Leavers' Weekend

Usually in the second to last weekend of each year the Year 8 Leavers Weekend will be indicated in the calendar. This weekend is a chance for the Year 8s to get away from the school with their parents and spend some time together before they finish their time at Waihi and head off to secondary school.

Parents are responsible for this weekend, and organisational details are arranged closer to the time by Year 8 parent representatives.

## Mail

Mail should be addressed to your child and posted care of **Waihi School, 611 Temuka-Orari Highway, RD 26, Temuka 7986**. Couriers should also be addressed the same. Although mail that is addressed to State Highway 1 will reach the school, it is often delayed as it is held at the Petrol Station in Winchester, and only checked every few days.

## Mobile Phones

Mobile phones are required in Pyne House. The phone day will be Wednesdays at 7:15pm, with more flexibility over the weekend depending upon activities. Please name / initial the phone.

There can be a lot of misuse with mobile phones and as such, each sign of misuse will result in a one week confiscation. A serious need for parental contact can be made through the phone in Matron's office.

## Police Vetting

All staff have been Police vetted and all hold current First Aid Certificates.

## Reading

It is compulsory to bring their own reading books as they are all required to have a book to read in the dorms before lights out, and also as part of prep. There is however a plentiful supply of books in the library to choose from.

## Repairs

Matron will arrange uniform repairs through the laundry, and these will be charged back to parents on the shop account.

Any accidental or wilful damage to windows, furniture, fittings, etc. will be repaired and charged to parents through the school extra's account. Notice of these breakages will be advised to parents.

## River Access / Pump Track / Low Ropes

It has always been a part of Waihi life that boarders have been able to visit the local Waihi River (800m from school) to explore, fish and have independent play. Our belief is that it is even more important now in our modern day life that this practice should continue.

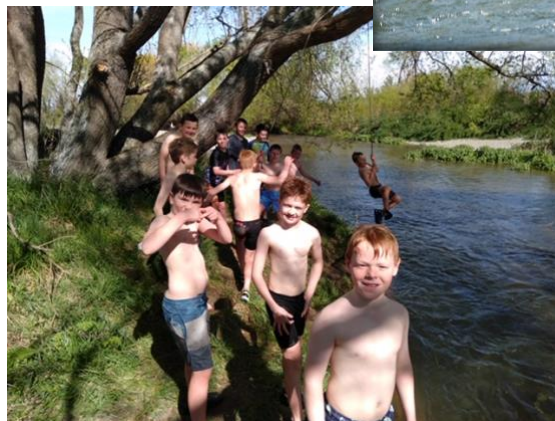
The river is regularly inspected to check on suitability and general safety.

It is important as parents you understand that in charging us with the 'duty of care' of your child, we will allow them to take trips to the river if they wish to do so, under the guidelines we set. This has been the status quo. However, it is necessary under current societal pressure for us to be clear that you understand this, and approve.

Therefore we ask that you sign the River Access Form and return it to school by email, or mail, as soon as possible. **Should you not wish to sign, your child will not be permitted to visit the river independently.**

Year 8 boarders may be permitted to visit the river after tea on a weekday provided all work is up to date, in a small group, and with Housemaster permission.

Any boarder may use the wonderful pump track and low ropes course if you give permission via the Google form. This will be for small group usage, unsupervised.



## Sport

Sport is compulsory for all students and is divided into summer and winter sports. **Any absence from sport must be approved by the Headmaster.**

All students are required to take part in athletics, cross-country and swimming events, as these occasions take place during the year.

The selection policy for our teams is as follows:

- For our sport in local competitions, every student is to play each week and given the size of the team squads, this may necessitate a rotational selection.
- For the inter-school games, the best players are selected and played as deemed by the coach.

We encourage the students to participate at the highest level, which may include representative selection for South Canterbury.

We expect parents to encourage their child's participation in sport and set a positive example to their child by applauding the good play of their team and of visiting teams, respecting the referee's decisions, and recognising the value and enjoyment of sport in their child's life.

Sports draws for the upcoming weekend are usually made available by the Wednesday evening preceding the date of fixtures.



## Security

We discourage students from bringing expensive items to school as the school accepts no responsibility for the loss or damage to these items. Money is rarely needed at school so we ask that your child is not sent with any cash, unless handed to Matron. Pyne House is run on mutual trust and as such it is easier not to risk temptation.

## Special Diets

If a special diet is required for your child you should obtain a letter from your doctor and forward to the Matron with clear requirements. These will be relayed to the kitchen staff.

## Services in Chapel

The school week begins with Chapel at 8.30am on Monday morning.

The Christmas Service, ANZAC Day Service, and Easter Chapel are compulsory for all students each year.

## Telephone Calls

Parents are encouraged to call their child at the set times indicated (see mobile phones). We ask that you please respect the scheduled prep times and not phone during these times.

The school only has three telephone lines, which on occasion may cause difficulty for parents in contacting staff, hence the necessity for each child to have a mobile phone. We encourage you to leave a message on the answer phone, which is cleared regularly. All boarders must come into the boarding house with a mobile phone.

## Tuck

Tuck can be brought to Pyne House, however **IT MUST BE HANDED INTO MATRON**, in a small sealed container. She will decide how and when your child can have it, although it is likely to be once a week, or as a reward.

## Uniform and Clothing Requirements

The following is information regarding uniform and clothing requirements.

- **Formal Uniform – Number 1s (*All Year*)**

Boys: Blazer, white shirt, tie, dark grey shorts, long grey socks, black lace up shoes

Girls: Blazer, white long-sleeve blouse tie, winter tartan skort, navy tights/long navy socks, black leather shoes (can be T-bar sandals)

- **Summer Uniform (*Terms One and Four*)**

Boys: Blazer, light blue Aertex shirt, light grey shorts, jersey, sandals (black or brown)

Girls: Blazer, white summer school blouse, summer checked skort, navy ankle socks, sandals (black or brown) or Black leather shoes (can be T-bar sandals)

- **Winter Uniform (*Terms Two and Three*)**

Boys: Blazer, Long sleeve grey shirt, tie, dark grey shorts, jersey, long grey socks, black lace-up shoes

Girls: Blazer, long sleeve white shirt, tie, winter tartan skort, jersey, navy tights/long navy socks, black leather shoes (can be T-bar sandals)



**Please attach nametags in the following places:**

- 1. On the INSIDE OF THE NECK on all shirts, pyjamas, pullovers, rugby jerseys etc.**
- 2. On the OUTSIDE FRONT of underwear. (Do not sew nametags to elastic waistbands).**
- 3. On the OUTSIDE of all socks starting at the top and running down the length of the sock.**
- 4. On the OUTSIDE CORNER of towels and handkerchiefs.**
- 5. All footwear must be clearly named.**

Loops for hanging should be attached to all sports clothing, boarders' blues, dressing gown, and halfway along the long edge of each towel.

**At the end of Term One, the following will be brought home:**

- Summer Aertex shirts/blouses
- Summer grey shorts/skorts
- Summer pyjamas
- Summer boarder's blues
- Summer sandals

*Boarders to return in Term Two with winter clothes as specified on the list*

**At the end of Term Three, the following will be brought home:**

- 2 Long sleeved shirts/blouses
- 1 dark grey shorts
- 1 winter tartan skort
- Rugby / soccer boots etc
- Winter boarder's blues
- Winter pyjamas

*Boarders to return in Term Four with summer clothes as specified on the list*

All sports clothing will be kept at school and sent home at the end of the year. Everything is sent home at the end of the year for checking.

**PLEASE OPEN YOUR CHILD'S SUITCASE EVERY HOLIDAYS AND CHECK THAT THE CLOTHES IN THEIR SUITCASE ARE THEIRS.**

**PLEASE ENSURE ALL ITEMS ARE NAMED**, and do not send extra or out of season uniform as we have limited space for storing clothes.

**Note: All items # are to be purchased from the Waihi Uniform Shop**

**The following items are required every term:**

- |   |                                       |
|---|---------------------------------------|
| # 1 Waihi Blazer  | 1 pair bedroom slippers (soft soles)  |
| # 1 Waihi white shirt (boys)                                | # 1 Waihi sports bag                  |
| #1 Waihi white long sleeve blouse (girls)                   | # 1 Waihi backpack                    |
| #1 Waihi dark grey shorts (for number 1 uniform)            | # 1 Waihi mesh laundry bag            |
| #1 Waihi check winter tartan skirt (for number 1 uniform)   | 6 handkerchiefs (optional)            |
| #1 pair Waihi long grey socks (boys)                        | 1 tin black nugget shoe polish        |
| #1 pair Waihi navy winter tights or long navy socks (girls) | 1 drink bottle                        |
| 6 pairs underwear (any colour)                              | 1 set casual/run around mufti clothes |
| 2 singlets/polyprops – white or navy only (optional)        | 1 set smart/dressier mufti clothes    |
| # 2 Waihi school ties                                       | 1 fitted bed underlay – named         |
| 2 pyjamas   | 1 pillow                              |
| 1 dressing gown   | 1 single duvet                        |
| # 2 Waihi black rugby shorts (boys)                         | Mobile phone                          |
| # 1 Waihi white sport shorts (boys)                         | 1 pair scuffs/jandals (optional)      |
| # 1 Waihi navy sport skirt (girls)                          | 1 Waihi single bed rug (optional)     |
| # 1 Waihi polar fleece or Merino jersey                     |                                       |
| # 1 Waihi tracksuit   |                                       |
| # 1 Waihi white polo shirt                                  |                                       |
| 1 navy or black waterproof jacket                           |                                       |
| 1 pair black lace up shoes (boys)                           |                                       |
| 1 pair black leather shoes – can be T-bar sandals (girls)   |                                       |
| 1 pair sports shoes   |                                       |

**In addition, the following are needed in:**

**Summer: (Terms One and Four)**

- 1 pair brown/black sandals (optional for Terms 1 and 4)
- # 2 Waihi light blue Aertex shirts/white summer blouse
- # 2 Waihi light grey shorts (boys)
- # 2 Waihi summer skirts (girls)
- # 1 Waihi regulation jersey
- #1 Waihi summer hat/cap
- #2 Waihi polo shirts (House colour)
- #3 pairs Waihi white sports socks with two navy stripes
- 3 pairs navy ankle socks (girls)
- 1 pair swimming shorts or swimsuit

**Summer Boarders' Blues:** (evening and weekend wear)

- # 2 Waihi navy polo shirts
- # 2 Waihi navy shorts

**Winter: (Terms Two and Three)**

- # 3 grey Waihi long-sleeved shirts (boys - 3 button only)
- #3 white Waihi long-sleeved blouses (girls)
- #2 Waihi dark grey shorts

#2 Waihi check winter tartan skorts (girls)  
#2 Waihi regulation jerseys  
#4 pairs Waihi long grey socks (boys)  
#4 pairs Waihi navy tights or long navy socks (girls)  
#1 pair Waihi rugby/football boots/netball trainers  
#2 Waihi rugby jersey (House colour)  
#3 pairs Waihi winter sport socks  
#1 Waihi beanie  
#1 Waihi scarf (optional)

Winter Boarders' Blues: (evening and weekend wear)

#2 Waihi navy winter tops  
#2 Waihi navy track pants

**New boarders are required to bring the following:**

1 strong wooden coat hanger with bar  
3 dozen woven nametags

**Please note:**

- Sheets and towels are provided by the School.
- Children to provide their own toiletries and wash bag and must not have any spray deodorant. Topups can be purchased from Matron if needed.  
*If, for medical reasons, your child cannot use regular off-the-shelf toiletry items, please let us know so an alternative can be found.*

## Using Devices – School Policy

### Text/Email Messages

We wish all students to use their devices (iPads and computers) responsibly in class time, and during prep, to aid learning. Unfortunately, we have seen a rise in the negative use of devices and the resultant distraction it causes. Surprisingly the biggest distraction has not come from gaming but from messaging, often from parents!

All the teaching and boarding staff would appreciate it if parents do not send emails/iMessages during the course of the school day. If for any reason your child does contact you during the academic day, or during prep time, please let us know so that we can discuss appropriate device use with them.

Should you require a message passed on to your child during the course of the day, please contact Penny Clack in the School Office in the first instance, and this will be passed on. In the evenings you may phone Pyne House and speak to the matron, housemaster or duty staff member.

For the best learning environment, we need to eliminate distractions as far as possible, to allow students to give their attention to the learning experiences. Students who have incoming messages/notifications throughout the course of the day do not have the focus required to give of their best.

We are also conscious that staff too can get distracted by their devices, and they are committed to leading by example and not checking their messages; texting etc when engaged with your child!

We appreciate your consideration and support with this matter.

## Visitors / Transportation

All new boarding families are asked to complete a 'Parent Approved Boarder Visiting Register' form, outlining who you give permission for your child to either have leave with, or be visited by without approval needing to be sought from you.

Parents are welcome to take their child out on tea leave if they are passing, as long as leave has been requested prior, and it does not coincide with any other school activity.

## Waihi School Shop

Uniform items can be purchased by ordering online (<https://waihi.school.nz/uniforms>) via our Waihi School website.

Parents are welcome to make appointments for a uniform fitting by contacting Laura Collis on [uniform@waihi.school.nz](mailto:uniform@waihi.school.nz)

Initial stationery packs are issued to all students at the start of the year, however your child can purchase stationery during the school day from the School Office, with permission from their teacher.

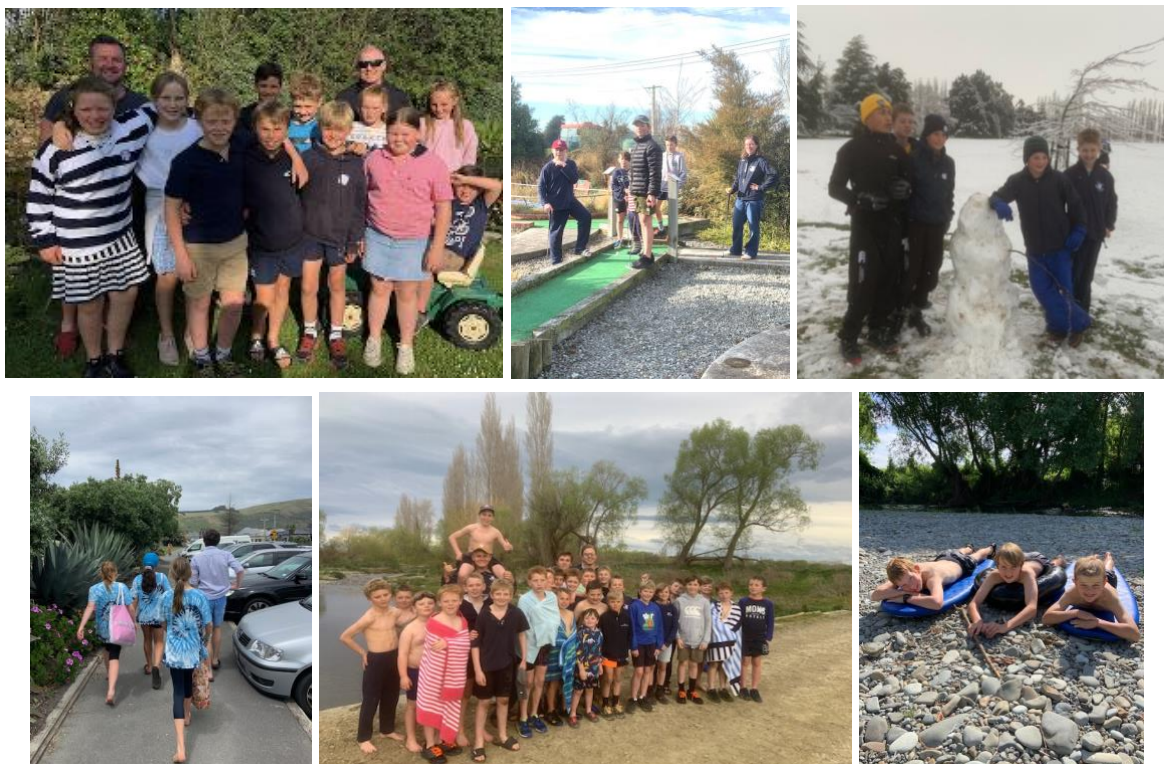
## Weekend Activities

Weekend activities are planned for those boarders remaining in the weekend. These may include a movie at the local cinema, mini golf, a trip to Tekapo, a hike up Little Mt Peel, mountain biking, or staying at school with games, trips to the river, or events such as the "Ultimate Boarder".

**Weekend outings are usually on Sundays between 11.00am–5.00pm, therefore returning boarders cannot be dropped off during these times unless by prior arrangement.**

Pyne House has a budget to contribute to the cost of these activities, however some charges will be billed to your child's 'extras' account.

If a major trip is planned, such as to the annual Crusaders v Highlanders match, consent will be sought by parents before boarders can attend.





## Waihi River Trips

It has always been a part of Waihi life that students have been able to visit the local Waihi River (800m from school) to explore, fish and have independent play. Our belief is that it is even more important now in our modern day life that this practice should continue.

Trips to the river most generally fall in the weekends unless staff and students plan eeling trips or various ventures at other times. Students are allowed to go to the river in groups of four (there must be two year eights) and they have to sign out and nominate a returning time. The river is regularly inspected to check on suitability and general safety.

It is important, as parents, you understand that in charging us with the 'duty of care' of your child, we will allow them to take trips to the river if they wish to do so, under the guidelines we set. This has been the status quo. However, it is necessary under current societal pressure for us to be very clear that you understand this and approve.

Therefore I am asking that you sign this document and return it to the School Office by mail, or email [executive@waihi.school.nz](mailto:executive@waihi.school.nz), as soon as possible. Should you not wish to give consent, your child will not be permitted to visit the river independently.

*Current parents – if you have completed this declaration in previous years and still give your consent, you do not need to complete this again.*

Allan Short  
Headmaster

### **Parent Declaration**

I / We fully understand Waihi School's position on visitation to the Waihi River and **give / do not give** (please circle)

permission for \_\_\_\_\_ (student's name) to take part in independent trips to the river.

Parent's Signature: \_\_\_\_\_

Date: \_\_\_\_ / \_\_\_\_ / \_\_\_\_





## Bus Transport Behaviour Contract

This contract is to be completed by all Waihi students. Throughout the course of the year there are times that all students will travel in the school vehicles and it is important they are aware of the rules associated with this.

**I agree to:**

- ✓ Sit sensibly
- ✓ Stay seated while the bus is moving
- ✓ Respect others on the bus
- ✓ Talk quietly
- ✓ Listen to and follow instructions from the driver
- ✓ Not distract the driver
- ✓ Respect bus property
- ✓ Not eat on the bus
- ✓ Respect other vehicle drivers/passengers

**If I do not follow the Bus Transport Rules, I understand that one or more of the following steps will take place:**

- ⇒ Copying out Bus Rules
- ⇒ Letter of apology
- ⇒ Time out
- ⇒ Designated seat (length of time to be decided)
- ⇒ Two days off the bus
- ⇒ One week off the bus
- ⇒ Bus transport option removed

**I understand that if any of the consequences listed above happen, my parents/caregivers will be contacted and the incident recorded in the Waihi School Bus Behaviour Record**

Student's Name: \_\_\_\_\_

Student's Signature: \_\_\_\_\_

Date: \_\_\_\_/\_\_\_\_/\_\_\_\_

Parent/Caregiver's Signature: \_\_\_\_\_

Date: \_\_\_\_/\_\_\_\_/\_\_\_\_

***This Bus Behaviour Contract remains in place for the duration  
of the Student's time at Waihi School***

# Waihi

